



SMS430[®]

SIGN MAKING SYSTEM

Industrial Sign and Label System



Network / USB / * / *

300 DPI resolution

Industrial Quality

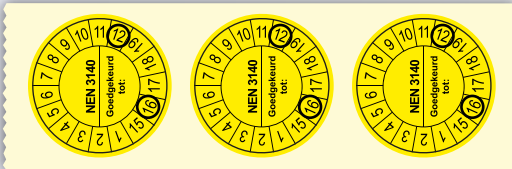
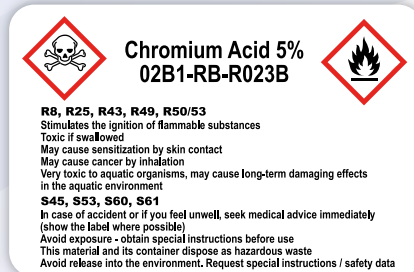
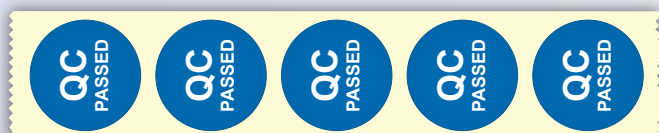
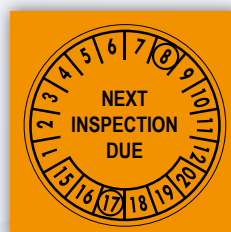
Maintenance labels | Health and Safety | Chemical labelling
Cable and Wire marking | Pipe and Valve marking
Equipment marking | Six Sigma and LEAN |

SMS-430 - Fast, Flexible and Network Ready!

The SMS-430 is technologically up to date, with the latest print head design and connectivity options to deliver a strong, reliable sign and label workhorse. Capable of producing labels from 13mm up to 100mm wide and in over 40 different quality materials, the systems high definition output is ideal for even the smallest of text and label details. Supplied with Microsoft[®] approved NiceLabel software and thousands of industrial graphics, the SMS-430 is a single solution for an enormous range of sign and labeling requirements.

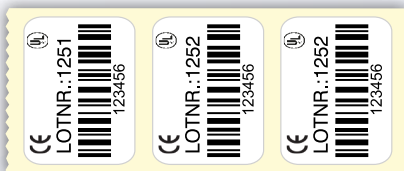
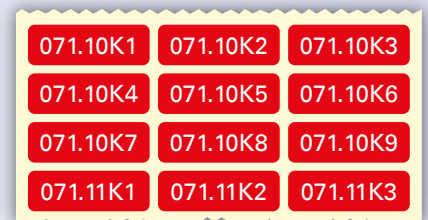
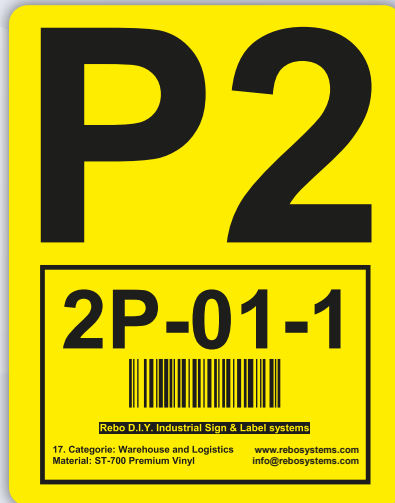
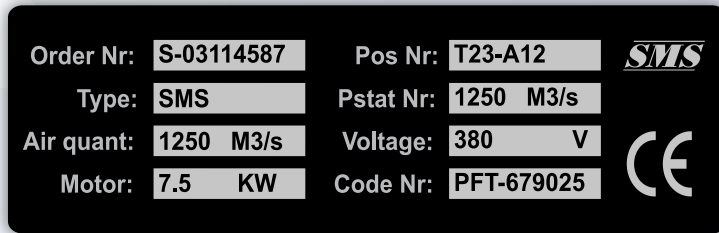
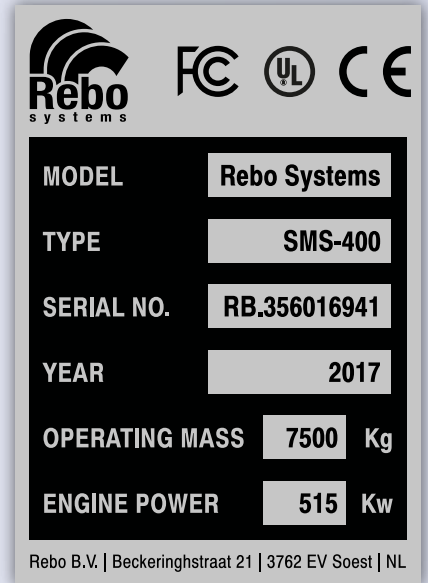


With the SMS-430 you can easily create all of the labels below!



STANDARD TAPE QUALITIES:

- **Industrial Vinyl (E300)** - Standard 3-5 year, perfect for most applications.
- **Premium Vinyl (ST700)** - High quality 5-7 year, for higher durability.
- ★ **High-Tack (HT700)** - High tack adhesive, ideal for difficult surfaces like wood, concrete, oil and low friction plastics.
- **Polyester (PT700)** - High tack adhesive, high temperature, low halide - ideal for machine plates and pipes.
- 🔥 **High Temperature Tape (H250)** - High tack adhesive and extra high temperature resistance.
- ❄️ **Cold Weather Tape (CW200)** - Good adhesion to extremely cold surfaces.



SPECIAL MATERIALS:

Removable Tape (M300) - Removable tape for temporary signs.

Reflective Tape (RT500) - Reflective tape for indoor and outdoor usage.

Fluorescent Tape (FL500) - Fluorescent tape with a very high visibility.

Photoluminescent Tape (RG500) - Glow-in-the-dark tape for signs that need to remain visible after a power cut.

Tags (T100) - Ideal for Lockout/Tagout, in a large range of colours and sizes. Fully printable and extremely tough.

Wire-Wraps (WI100) - Self laminating, wrap around cable and wire marking.

Cable Tags (EC100) - High quality cable and hose tags, fixed with cable ties.

Shrink Tubes (ES100) - Shrink tubing for cable and wire marking - high quality 3:1 in a range of sizes and colours.

Raised Profile Labels (RL100) - Create your own Raised Profile Labels and replace your engraved plates at a lower cost.

For a **FREE sample pack** of our label materials
contact us on info@rebosystems.com or call us on +31 (0)35 601 6941

SMS-430 - Durable signs and labels from a durable work horse

From health and safety signage to data base connected labels, the SMS-430 can deliver both simple and sophisticated solutions. It has over 40 different materials for every application including: cable and wire marking, high or low temperatures, oily and difficult surfaces, permanent or removable adhesives, mild or aggressive chemical resistance and more...

A dependable system, delivered with top class software!



- Comes with 'click and go' ready to use label templates – just add text and print.
- Professional software with extensive print & design capabilities
- Easy to use Design Wizards speed up production
- Design and edit texts, barcodes, lines, shapes and images
- Advanced functionality for multiple field linking
- Powerful 'form' designer for standardised layouts with user data entry
- Thousands of industrial symbols and icons in compliance with the latest regulations
- Advanced design tools like rich text, linestyles, group, textframes with automatic font size
- Easily import data into your labels from data bases and spread sheets (Excel, Acces)
- Microsoft® certified software

Printer specifications

Printing Method	Direct Thermal & Thermal Transfer
Resolution	300dpi
Speed	Min. 25,4 ~ Max. 101,6mm/s (1 ~ 4ips)
Print Length	Min. 5mm ~ Max. 1270mm
Print Width	Max. 104mm
Dimensions	W 220mm x D 278mm x H 187mm
Weight	2,4kg
Sensors	1x "Media gap" / 1x "Reflective" / 1x "Transmissive" 1x "Print head up" / 1x "Ribbon out"
Operation Interface	2x LED indicator / 1x button (Feed)
Connectivity	USB-A, USB-B, RS-232, Ethernet * Optional: Bluetooth, WiFi
Agency Listing	CE, FCC, UL/cULus, CCC, RoHS, BSMI
Media Type	Roll-feed, Die-cut, Continuous, Tags
Ribbon Type	Wax, Resin, Wax/Resin



Visit our comprehensive website to review the large range of material available!

www.rebosystems.com



Rebo B.V.
Beckerinhstraat 21
3762 EV Soest
Netherlands

+31 (0)35 - 601 69 41
@ info@rebosystems.com
sales@rebosystems.com
www.rebosystems.com